

PRESSURE/VACUUM RELIEF VALVES



Model 1200 A

- Pressure/Vacuum Relief Valve
- Modular design
- Sizes: 2" through 12"
- Pressure settings: 1/2 oz./in.² to 15 PSIG
- Vacuum settings: 1/2 oz./in.² to 12 PSIG



Model 1220 A

- Pressure/Vacuum Relief Valve
- Pipe-away feature
- Modular design
- Sizes: 2" through 12"
- Pressure settings: 1/2 oz./in.² to 15 PSIG
- Vacuum settings: 1/2 oz./in.² to 12 PSIG



Model 1220 A / 7618

- Pressure/Vacuum Relief Valve and Flame Arrester w/Pipe-Away Feature



Fiberglass Valves

- Most Groth valves can be constructed of fiberglass.

PRESSURE RELIEF VALVES



Model 1260 A

- Pressure Relief Valve
- Modular design
- Pipe-away feature
- Sizes: 2" through 12"
- Pressure settings: 1/2 oz./in.² to 15 PSIG



Model 2300 .A

- Pressure Relief Valve
- Modular design
- Sizes: 2" through 12"
- Pressure settings: 1/2 oz./in.² to 15 PSIG



Model 1300 A

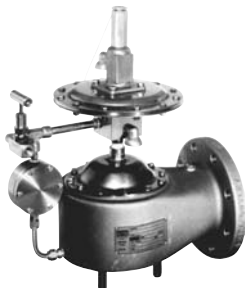
- Vacuum breaker
- Modular design
- Sizes: 2" through 12"
- Vacuum settings: 1/2 oz./in.² to 12 PSIG



Model 1360 A

- Vacuum breaker
- Modular design
- Side mount
- Modular design
- Sizes: 3" through 14"
- Vacuum settings: 1/2 oz./in.² to 12 PSIG

PILOT OPERATED RELIEF VALVES



Model 1660A

- Pressure Relief Valve
- High flow capacity
- Sizes: 2" through 12"
- Pressure settings: 2" W.C. through 15 PSIG



Model 1420

- Pressure/Vacuum Relief Valve
- Modular design
- Pressure & vacuum relief
- High flow capacity
- Sizes: 2" through 12"
- Pressure settings: 3 oz./in.² through 15 PSIG
- Vacuum settings: 1/2 oz./in.² to 12 PSIG



Model 1560

- Air actuated pressure relief for extreme service
- Modular design
- Pressure relief
- High flow capacity
- Sizes: 2" through 12"
- Pressure settings: 3 oz./in.² through 15 PSIG



Model 2500

- Emergency Relief Valve
- Sizes: 18" and 24"
- Pressure settings: 8 oz./in.² to 15 PSIG

Available in aluminum (type 356), carbon steel, stainless steel, fiberglass, and other materials, in most models.

EMERGENCY RELIEF VALVES



Model 2301A

- Pressure Relief Valve
- Sizes: 2" through 12"
- Pressure settings: 1/2 oz./in.² to 15 PSIG



Model 2000A

- Emergency Relief Manhole Cover
- Sizes: 16", 20", and 24"
- Pressure settings: 1-1/2 oz./in.² to 16 oz./in.²
- Also available with vacuum breaker



Model 2450A

- Emergency Relief Manhole Cover with hinged cover with vacuum breaker
- Sizes: 20" through 24"
- Vacuum settings: 1/2 oz./in.² to 4 oz./in.²
- Pressure settings: 2 oz./in.² to 8 oz./in.²
- Also available pressure only



Model 2100

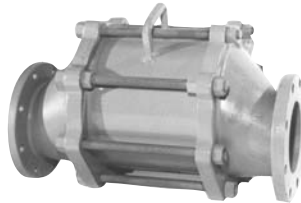
- High Pressure Emergency Relief Valve
- Sizes: 16", 20", and 24"
- Pressure settings: 1 PSIG to 15 PSIG

FLAME AND DETONATION ARRESTERS



Model 7618

- Flame arrester (vertical design)
- FM approved
- Sizes: 2" through 60"
- Available with weather hood



Model 7628

- Flame arrester (horizontal design)
- FM approved
- Sizes: 2" through 30"



Model 7658 A

- Detonation arrester (horizontal design)
- Coast Guard approved
- Sizes: 2" through 24"



Model 7622

- Flame check
- Sizes: 1/2" through 1-1/2"

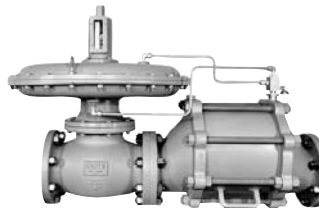
BLANKET GAS REGULATOR



Series 3000

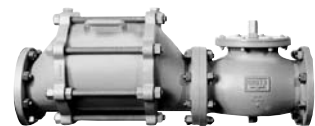
- Blanket Gas Regulators
- Depad Valves
- Setting from 0.5" W.C. to 15 PSIG
- Consult factory for vacuum applications

FLAME TRAP ASSEMBLIES



Model 8400A

- Back Pressure Regulator and Flame Trap Assembly
- Sizes: 2" through 12"



Model 8500A

- Flame Trap Assembly
- Sizes: 2" through 12"